

**TECHNICAL INFORMATION**  
**SOUTH MILWAUKEE PERFORMING ARTS CENTER**

**901 15th Ave, South Milwaukee, WI 53172-1521**

Office: 414.766.5049, FAX: 414.766.5005

E-Mail: [pacboxoffice@sdsd.k12.wi.us](mailto:pacboxoffice@sdsd.k12.wi.us)



**SOUTH MILWAUKEE**  
**PERFORMING ARTS CENTER**

## Table of Contents

Page 1	Cover Page
Page 2	Table of Contents
Page 3	Contact Information, Taxi, Hotels, Restaurants, Laundry, Handicapped Accessibility, Emergency contacts
Page 4	Travel directions, Parking directions, Time zone
Page 5	Management
Page 6	Load-in
Page 7	Carpentry
Page 9	Lighting
Page 11	Sound
Page 13	Props
Page 14	Wardrobe
Page 15	Lineset Schedule
Page 16	Photos of House and Stage
Page 17	Seating Chart

## General Information

### **Technical Services:**

Nick DaVia, Technical Director  
O. 414.766.5293  
F. 414.766.5005  
E. ndavia@sdsd.k12.wi.us

### **Programming:**

Rachel Sorce, Executive Director  
O. 414.766.5048  
F. 414.766.5005  
E. rsorce@sdsd.k12.wi.us

### **Box Office:**

Michelle Majerus-Uelmen  
O. 414.766.5046  
F. 414.766.5005  
E. mmajerus-uelmen@sdsd.k12.wi.us

### **Taxi Services:**

Uber  
Airport Service Inc 414.861.7555  
Yellow Cab Co-Op 414.271.1800  
American United Taxi 414.220.5000

### **Sponsoring Hotel:**

Courtyard by Marriot, 4060 S 5th St., Milwaukee, WI 53207, 414.747.4405

### **Restaurants:** South Milwaukee, WI 53172

Azteca	Paisano's	Toppers
901 Milwaukee Ave	113 N Chicago Ave	2971 S Chicago Ave
Open 10am-9pm	Open 6am-10pm	10:30am-3am
Mexican	Italian	Pizza

### **Laundry Services:**

Keith's Cleaners, 414.774.2050, 7027 W North Ave, Milwaukee, WI 53213 – 7am-8pm (5pm Sat.)  
Laundry Basket, 414.768.0300, 2161 E Rawson Ave, Oak Creek, WI 53154 – 24 Hours

### **Handicapped Access:**

Nine (9) removable seats for wheelchair access, located throughout seating.  
Six (6) handicapped accessible seats, located throughout seating.  
Handicapped accessible restrooms available at both sides of lobby.  
Elevator access from patron entrance on ground level to PAC entrance on second level.  
Elevator Access from stage to Orchestra pit.  
Audio Assistance System available on request.

### **Emergency Numbers: ALL EMERGENCIES – 7-911 OR 911**

Fire, non-emergency: 414.768.8191, 2424 - 15th Ave, S Milwaukee, WI 53172  
Police, non-emergency: 414.768.8060, 2424 - 15th Ave, S Milwaukee, WI 53172  
Ambulance: 911 or 7-911  
Hospital: 414.489.9000, 2424 - 15th Ave, S Milwaukee, WI 53172  
Urgent Care: 414.762.7270 - 3611 S Chicago Ave, S Milwaukee, WI 53172  
Chiropractic: 414.762.8441 - 1333 College Ave, S Milwaukee, WI 53172  
Dental: 414.764.6070 - 1333 College Ave, S Milwaukee, WI 53172

## Directions

### **Travel Directions:**

#### **Milwaukee via WI-794:**

Get on I-794 E. Take WI-794 S to S Pennsylvania Ave and College Ave to 15th Ave.

#### **Brookfield via I-894:**

Get on US-41 S/US-45 S in Wauwatosa. Continue on US-45 S. Take I-894 E to Rawson Ave in Oak Creek. Take exit 320 from I-41/I-94 E/US-41 S. Continue on W. Rawson Ave. Drive to 15<sup>th</sup> Ave and turn left.

#### **Chicago via I-94 W:**

Continue to I-290 W. Follow I-94 W to W Rawson Ave in Oak Creek. Take Exit 320 from I-94 W. Continue on W. Rawson Ave. Drive to 15<sup>th</sup> Ave and turn left.

#### **Racine via WI-32:**

Head North on WI-32 N/Main St toward 6th St. Turn left onto Hamilton St. Turn right onto Douglas Ave. Continue onto Douglas Ave. Continue onto S Chicago Rd. Turn left onto Drexel Blvd. Turn right onto 15th Ave, destination on right.

### **Parking Directions:**

#### **Audience Members:**

When coming in from College Ave and traveling South on 15th Ave, turn left onto Oak Creek Parkway, and it is the turn immediately preceding the School Please enter through door nine (9).

#### **Show Staff:**

There is limited parking in the District Office parking lot, found by traveling further South on 15th Ave and turning left when approaching door seven (7). During school days, these spots are reserved for district and PAC staff members; on holidays, weekends, and off hours some of these spots may become available. There are also “visitor” parking spots in this lot that may be available for use during times when the District Office is operational.

#### **Buses:**

Buses can be parked in audience parking lot, or in driveway of District Lot during non-operational hours, for operational hours please park in District Lot driveway.

#### **Trucks and Trailers:**

Loading dock is located in District Lot; trucks and trailers may remain on driveway.

#### **Generators:**

Generators may be run on site. Shore power is not available.

**Time Zone:** UTC/GMT -06:00 Central Standard Time, DST: 13 March 2016, 02:00 – 06 November 2016, 02:00

## Management

### **Production Room:**

There is no formal production office. A table and power may be set up in backstage hallway for production use. Wi-Fi access is available throughout building.

### **Green Room:**

There is no separate green room, the large dressing room is equipped with tables, chairs, couches, and amenities including a fridge, coffee maker, and microwave.

### **Rehearsal rooms:**

There are no formal rehearsal areas outside of the theatre space. After school hours, some spaces may become available such as, the middle school theatre (café-torium), band room, choir room, music classroom, and staff dining room.

### **Crews:**

Paid student staff available. Paid non-union crew available. Union crew not available.

### **Handicapped Access:**

Elevator access to stage, dressing rooms on same floor as stage. Handicapped accessible bathrooms in each dressing room.

### **Policies:**

House opens thirty (30) minutes prior to event start time. There is no alcohol allowed on school grounds. There is no smoking on school grounds.

### **WiFi Access:**

**SSID:** sdsm-secure

**Username:** pacartist

**Password:** pacguest

**Filter instructions:** To have greater access to social media sites, forums, and file services: enter <http://192.168.1.1/login> into the address bar, and use the above credentials to log in.

**Speed:** The up/down varies with use, but averages from 12/5 (4ms ping) to 23/39 (9ms ping) under normal loads.

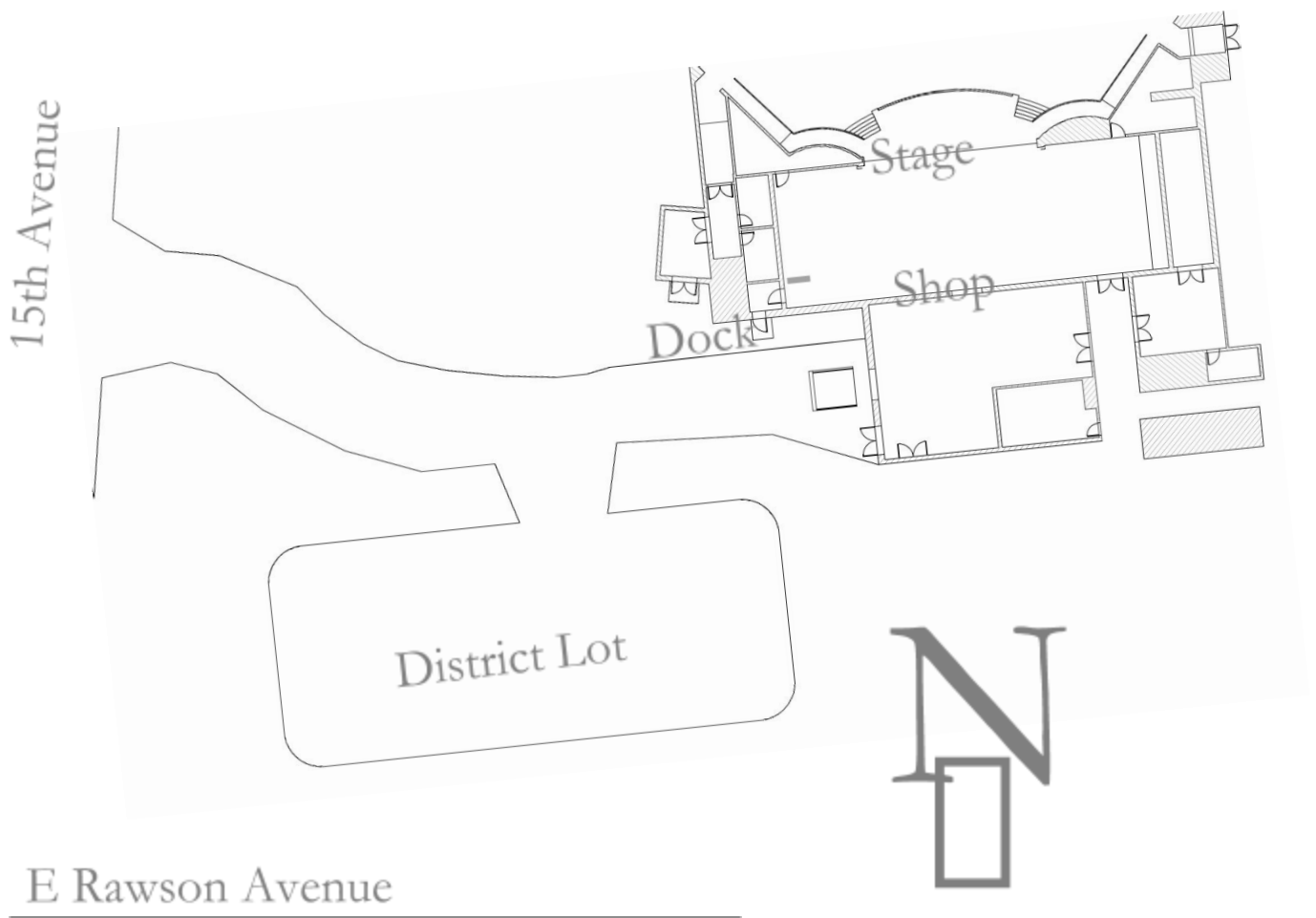
## Load-in Area

### Dimensions:

Load-in must take place via scene shop. Scene shop is connected to stage. Door from stage to scene shop is upstage center and is 7'-8" (2.33 m) wide and is 14'-0" (4.26 m) high. Door to scene shop is ~50' (15.24 m) from stage door to the right, door from exterior matches interior door in dimension. Door to scene shop is on 15th Ave in District Lot. Dock is at ground level. Hydraulic platform lift directly in front of scene shop door. It has a 5,000 lb (2,267 k) lift capacity. Lift is 6'-0" (1.82 m) wide and 8'-0" (2.43 m) long. Lift travels from 0'-0" (0 m) up to 4'-11" (1.5 m) high.

College Avenue

---



## Carpentry

### **Seating:**

786 seats, Nine (9) seats removable for wheelchair seating, six (6) seats handicapped accessible.

See page 17 for seating chart.

### **Stage Dimensions:**

**Proscenium:** 42'-4" (12.9 m) wide by 23'-9" (7.24 m) high. The stage is 32'-7" (9.93 m) from plaster to the upstage wall. The apron depth is 16'-4" (4.97 m) from the edge to plaster.

**Wing Space:** Stage left is 22'-7" (6.88 m) full stage depth. Obstructions in far upstage left protruding ~8'-0" (2.43 m) onstage and ~5'-0" (1.52 m) downstage for emergency equipment and exit. Stage right is 24'-11" (7.59 m) full stage depth of usable space, total width including rail and loading gallery access is 28'-10" (8.78 m). Obstructions include door on upstage wall that is 11'-5" (3.47 m) from stage left wall and 6'-3" (1.9 m) wide.

**Grid Height:** From deck to top of grid is 51'-11" (15.82 m) with an effective flying height of 50'-0" (15.24 m).

**Orchestra Pit:** Approximately 20' d x 40' w (6.1m d x 12.19m w) with a maximum working height of 11'-0" (3.35 m) below stage and no lift. Pit has cover made of eight (8) sections that are individually removable. Pit cover can support load of 150 lbs. per sq. ft. (732 kg per sq. m). Removal of pit cover will add mandatory crew call to rental invoice [three (3) stagehands with a two (2) hour minimum] for both removal and restore. Removed sections will be covered by net when not in show or rehearsal. Risers may be placed in pit to elevate musicians and/or conductor, if available. Removal of pit cover is not guaranteed, and is at the sole discretion of venue's Technical Director.

**Stage Height:** 3'-6" (1.16 m) above house floor.

**Stage Floor:** Consists of two sections, use datum line as break. Floor upstage of plaster line is 0.25" (6.35 mm) tempered hardboard (masonite) over 1.25" (3.17 cm) of plywood and painted flat black. Stage floor downstage of plaster is blonde, glossy finished, hardwood floor. No traps available in stage floor. Stage floor upstage of plaster may be screwed, nailed, or lagged. Floor must be plugged after use. Stage floor downstage of plaster may not be screwed, nailed, or lagged.

**Dance Floor:** A Harlequin style, black, dance floor is available upon request with appropriate notice and scheduling of a crew call.

### **House Goods (Drapery):**

**House Border:** No house border.

**House Curtain:** Rusty red traveler with center split and guillotine options. Traveler operation stage right of curtain, manual lift line stage right at fly rail.

**Legs:** Three (3) sets, each black velour at 15'-0" (4.57 m) wide and 26'-0" (7.92 m) high. Optional set fullness via grommets.

**Borders:** Five (5), black velour at 55'-0" (16.76 m) wide and 11'-0" (3.35 m) high, no fullness.

**Full Stage:** Two (2) travellers with center split, black velour at 55'-0" (16.76 m) wide and 26'-0" (7.92 m) high, sewn fullness.

**Scrim:** One (1), black sharktooth.

**Cyclorama:** One (1), white, seamed muslin.

**Lineset Data:**

**Lineset Plot:** See page 15.

**Working height of battens:** High trim is 49'-3" (15.01 m). Low trim is 4'-2.5" (1.28 m).

**Battens:** Twenty-Three (23), each is 57'-0" (17.37 m) long, 1 1/2" Schedule 40 pipe, on 0'-8" (20 cm) centers or more, five (5) lift lines.

**Type:** Single purchase, all lines.

**Arbor Capacity:** 1,303 lbs. (591 kg) per batten.

**Available weight:** Loading Gallery has x lbs. ( kg). Deck has x lbs. (kg).

Brick Weight	Amount on Deck	Amount on Loading Rail	Thickness
43 lb (19.5 kg)			
21 lb (9.53 kg)			

**Loading Gallery:** Stage right, 45'-0" (13.72 m) above deck.

**Pin rail:** None.

**Support Areas:**

**Crossover:** upstage of line 23 is ~4'-0" (1.2 m).

**Shop Area:** Located through overhead door on upstage wall 7'-8" (2.33 m) wide and is 14'-0" (4.26 m) high. Limited tools available.

**Storage:** Limited storage available in orchestra pit and hallways leading to pit.



## Lighting

**Power:** There is one (1) company switch 120/208V 3-phase WYE, 100A/leg. Bare tail tie-in. Company switch located in utility room on balcony level off of stage right. *Note: All power tie-ins other than plugging into an existing receptacle are to be done by the House Technical Staff unless otherwise agreed upon.*

**Dimmers:** All dimming is via ETC Sensor racks with CEM control modules, 20A/2.4 kW dimmer, 0 - spare dimmer modules, 3 - CC20 modules (6 circuits) available. All dimmers respond to DMX. There are 166 available dimmers for stage lighting (L5-20R), 13 for work lights (5-15R duplex), and 22 for house lights (hard-wired).

**Control Board:** ETC Congo Jr. Running ETC Cobalt. 40 Fader master wing attached. Located in control booth at back of house.

**Houselights:** Full control stations located in control booth and backstage stage right. Partial control stations are located at all entrances and exits of theatre.

**Circuits:** There are 166 available circuits for stage lighting (L5-20R) via raceway, hardwired receptacle, or permanent box. 13 circuits for work lights (5-15R, duplex) via raceway. 22 circuits for house lights (hard-wired).

**Circuit Chart:** See drawing package.

**FOH Transfer:** Unison System must be in [OFF] preset, entering [DISABLED] mode is recommended.

### Equipment Inventory:

#### FOH and Stage Instruments:

10	S4 – 10°	ETC	575 W	12"	L5-20
12	S4 – 19°	ETC	575 W	6.25"	L5-20
18	S4 – 26°	ETC	575 W	6.25"	L5-20
42	S4 – 36°	ETC	575 W	6.25"	L5-20
4	S4 – 50°	ETC	575 W	6.25"	L5-20
18	S4 – PARnel	ETC	575 W	7.5"	L5-20
18	S4 – PAR EA	ETC	575 W	7.5"	L5-20
6	S4 – Fresnel	ETC	575 W	7.5"	L5-20
15	Desire D40 Vivid	ETC	110 W	-	L5-20/5-15
10	Selador 21 Vivid-R	ETC	320 W	-	L5-20/5-15
5	Sky Cyc (3)	Altman	1 kW (3 cir.)	15-1/2" x 15-7/8"	L5-20
4	Borderlight 6576	Altman	150 W (3 cir.)	4-3/8" x 4-3/4"	L5-20
24	14" Scoop	Altman	500 W	15-3/4" x 16"	5-15
6	S4 – 26° Lens Tube	ETC	-	6.25"	-

#### Followspots:

2	Lycian S. Clubspot	FLE/MR16 360 W		Balcony
---	--------------------	----------------	--	---------

**Hardware:** 12 – 6.25" Top hats, 6 – 6.25" Half Hats, 4 – 7.5" Barn doors, 25 – S4 "B" Template Holders, 8 – Boom bases, 8 – 11'-0" (3.35 m) pipes, 4 – 8'-0" (2.44 m) pipes.

**Cable:** Small amount of cable in various lengths may be available.

**Film, Video, and Projection Equipment:**

Epson Powerlite Pro L1 S00UNL-WUXGA't 080p'1 2000 Lumen, Mid Lens #3  
HDMI connection in booth (2) and Orchestra Pit (1), Blue Ray Player booth, HDMI  
to VGA adaptors are available.

**Notes:** Running lights at fly rail (blue) and upstage wall (blue) available, portable run lights  
may be available, spotting light (blue) in booth on center. 6 – ETC Smartbars may be  
available on request for remote dimming needs. US/DS boom circuits run on floor,  
MS pairs run to battens. Spare/Additional ETC Congo Jr. available, ETC Smartfade  
1248 available, ETC Express 72/144 available. D40s fit with WR lens (VNR and MR  
available), PARs fit with VNSP (Backlight) and MFL (Sidelight) standard (WFL,  
MFL, NSP, and VNSP) available for each fixture.

## Sound

**Power:** There is one (1) company switch 120/208V 3-phase WYE, 100A/leg. Bare tail tie-in. Company switch located in utility room on balcony level off of stage right. *Note: All power tie-ins other than plugging into an existing receptacle are to be done by the House Technical Staff unless otherwise agreed upon.*

**Wiring:** See drawing package.

**Control Locations:** Booth is located at rear of house. Mix position may be available area in front of booth on center of house covering a 14'-0" x 5'-0" (4.26 x 1.52 m) area. Will need 25'-0" (7.62 m) snake to reach patch panel, if using. House has 1 - 16 connector (XLR-XLR) and 1 - 8 connector (XLR-XLR) snake available.

**Hearing Assist System:** None.

**Monitor/Paging System:** Program input to backstage dressing rooms.

**Production Communications:** one (1) Clearcom CS-222 in booth, two (2) channels, twelve (12) CC-95 headsets, ten (10) RS-501 belt-packs, one (1) MS-232 station in booth, one (1) PS 232 station in booth, three (3) jacks (A or B) in balcony, three (3) jacks (A or B) in catwalk, two (2) jacks (A or B) in orchestra pit, four (4) KB-211 [backstage left and right, and one (1) in each dressing room], one (1) jack backstage left, one (1) jack backstage right, one (1) jack upstage wall on center.

### Equipment Inventory:

#### Mixing Consoles:

1	Allen and Heath	QU-32C	32 Mic/Line In 3 Stereo In	24 Mix Outputs
1	Soundcraft	Series Two	40 Mic/Line In 2 Stereo In	8 Group Outputs 8 Aux Outputs 2 Matrix Outputs 1 Stereo Output 1 Mono Output

**Fixed Speakers:** six (6) JBL AM5215/64 2-Way PA, LF 1000W (4000W Peak) – 2 hrs, LF 600W (2400W Peak) – 100 hrs, HF 75W (300W Peak) – 2 hrs, suspended from ceiling over house in left center right configuration. Two (2) BagEnd Subwoofers, located in balcony. See drawing package for specific locations.

**Portable Speakers:** six (6) Mackie C300Z monitors, LF 300W, HF 150W, 16" wide x 15" deep x 26" high weighing 46 lbs (41cm wide x 38cm deep x 66cm high weighing 21 kg).

**Microphones:**

4	Shure	Beta 58A	Supercardioid Dynamic
4	Shure	Beta 57A	Supercardioid Dynamic
1	Shure	SM58S	Cardioid Dynamic
2	SHURE	ULXD2/B58	Handheld Transmitter with BETA 58A Microphone
6	SHURE	ULXD1	Digital Wireless Bodypack
12	CountryMan	E6 Headset	Subminiature Omnidirectional Condenser
2	Shure	WL185	Mini Cardioid Condenser
3	Shure	SM81	Cardioid Condenser
3	Shure	MX202B/C	Cardioid Condenser Choir
1	Audio-Technica	AT825	X/Y Stereo Field Condenser
2	Audio-Technica	AT804	Omnidirectional Dynamic
2	Audio-Technica	Pro 42	Cardioid Dynamic Boundary
1	Shure	MX418/C	Cardioid Condenser (Gooseneck)
1	Crown	PCC-160	Supercardioid

**Playback:** one (1) Tascam CD-RW402 Dual CD Player / Recorder, A&H QU-32C has built in USB playback available; laptop (with VLC, Multiplay, and Microsoft PowerPoint) may be available.

**Signal Processors:** one (1) Ashley GQX-3102 1/3 Octave Graphic EQ, four (4) Rane GE30 Graphic Equalizer, one (1) dbx 1046 Quad Compressor/Limiter, one (1) dbx dbx 1066 Dual Compressor/Limiter/Gate, one (1) Yamaha SPX2000 Multi-effects Processor.

**Amplifiers:** two (2) Crown CTs 2000 (stage sends), six (6) Crown CTs 1200 (House PA), one (1) Crown CTs 3000 (Subs).

**Cable:** various cables and adaptors available.

**Direct Boxes:** two (2) Radial J48 Active DI, five (5) Radial JDI Passive DI, one (1) ProCo CB-1 DI.

**Notes:** microphone patch bay includes 32 mic lines to stage, 16 mic lines to orchestra pit, 4 mic lines to catwalk, and 8 mic lines to amp rack. Monitor patch bay includes 12 lines to stage, 8 lines to orchestra pit, and 4 lines to balcony. Subs use BagEnd Infra-mX2 Crossover, House PA uses Miles M44 Multisonic Imager, House PA uses Peavey Media Matrix X-Frame 88 and MM 8802 System Processor. Lobby paging, program monitor and chime available. One (1) 50' (15.24m) quadbox available, and two (2) 25' (7.62m) quadboxes available. Yamaha C6X 7' Concert Grand Piano, upright piano, and keyboard available. Additional upright piano in orchestra pit.

## Props

**Orchestra Pit:** Approximately 20' d x 40' w (6.1m d x 12.19m w) with a maximum working height of 11'-0" (3.35 m) below stage and no lift. Pit has cover made of eight (8) sections that are individually removable. Pit cover can support load of 150 lbs. per sq. ft. (732 kg per sq. m). Removal of pit cover will add mandatory crew call to rental invoice [three (3) stagehands with a two (2) hour minimum] for both removal and restore. Removed sections will be covered by net when not in show or rehearsal. Risers may be placed in pit to elevate musicians and/or conductor, if available. Removal of pit cover is not guaranteed, and is at the sole discretion of venue's Technical Director.

### **Music:**

**Chairs:** sixty (60) Wegner Student Music Chairs, black. Additional Wegner chairs may be available, black pans and backs with chrome legs.

**Stands:** sixty (60) Manhasset Music Stands, black. Conductor stand may be available.

**Stand Lights:** twenty-five (25) lights, lamped at 35W.

**Conductor Podium:** one (1) square wooden with spindle back, 5" (12.7 cm) height, access from 3 sides, may be available.

**Orchestra Shell:** two (2) Wenger acoustic clouds (midstage and downstage), off-white. Eight (8) Wenger Legacy Classic, 15'-2" (4.62m) fully extended, off-white.

**Platforms:** No platforms available.

**Choral Risers:** seven (7), Wenger 3-step rolling choral risers, gray carpet with black hardware, may be available.

**Dance Floor:** A Harlequin style, black, dance floor is available upon request with appropriate notice and scheduling of a crew call.

**Lecterns:** one (1), semi-modern style in wood, light cherry stain.

**Notes:** High school props and scenic items may be available on a limited basis.

## Wardrobe

**Dressing Rooms:** one (1) larger room 415 ft<sup>2</sup> (126m<sup>2</sup>) with single stall bathroom, 15' (4.5m) makeup station with power, lighting, and full width mirror, one (1) 8' (2.44m) clothing rack. One (1) smaller room 265 ft<sup>2</sup> (80.7m<sup>2</sup>) with single stall bathroom, 12' (3.6) makeup station with power, lighting, and full width mirror, one (1) 8' (2.4m) clothing rack. Rooms contain some amenities including: tables, seating and small fridges. Dressing rooms are located on same level as stage with access via stage right.

**Wardrobe Area:** No dedicated wardrobe area available, additional room may be rented for such use for an added fee, but company would be responsible for all amenities for such a room.

**Irons:** None.

**Ironing Boards:** None.

**Steamers:** None.

**Washers/Dryers:** None.

**Racks and hangers:** One (1) in each dressing room, limited hanger availability.

**Quick Change Booths:** Temporary booths may be set up but not guaranteed, please discuss with TD as early as possible.

**Notes:** For all wardrobe needs beyond two dressing rooms (as listed), please discuss with TD as early as possible.

## Lineset Schedule

LINE	GOOD	DISTANCE FROM PLASTER	TRIM	NOTES
0	FIRE CURTAIN	0" – 0m		
DEAD	PROJ. SCREEN	0'-10" - 0.254m		
1	HOUSE CURTAIN	1'-9" – 0.5334m		RUSTY RED, TRAVELER (CENTER SPLIT) AND GUILLOTINE, SEWN FULLNESS
2	BORDER	2'-6"- 0.762m		
3	LEG	3'-0 ½" – 0.9271m		
4	ELECTRIC, 1ST	4'-4" – 1.3208m		
5	ACOUSTIC CLOUD	6'-9" – 2.0574m		
6	BORDER AND LEG	7'-9" – 2.3622m		
7		8'-6 ¼" – 2.6035m		
8		9'-1 ½" – 2.7813m		
9	ELECTRIC, 2ND	11'-1" – 3.3702m		
10	BORDER	13'-1" – 3.9878m		
11		13'-8 ½" – 4.1783m		
12	MS TRAVELER	14'-6 ½" – 4.4323m		CENTER SPLIT, SEWN FULLNESS
13		15'-9 ½" – 4.8132m		
14	ACOUSTIC CLOUD	16'-6" – 5.0292m		
15	BORDER	17'-1" – 5.207m		
16	LEG	17'-9" – 5.4102m		
17	ELECTRIC, 3RD	19'-1" – 5.8166m		
18		21'-8" – 6.604m		
19	BORDER	22'-5 1/2" – 6.8453m		
20		23'-7" – 7.1882m		
21	US TRAVELER	24'-3 ½" – 7.4041m		CENTER SPLIT, SEWN FULLNESS
22	ELECTRIC, 4 <sup>TH</sup>	25'-8 ½" – 7.8359m		
23	CYC	28'-2" – 8.5852m		WHITE

## Photos of House and Stage





# STAGE

- Key:**
- Removable Wheel Chair Seat
  - Handicap Accessible Seat
  - Premium Seat
  - Mid-Level Seat
  - Obstructed Seat

